



About St Wilfrid's Church

Low Marnham is recorded in Domesday Book as being under the lordship of Roger de Busli. For most of the Middle Ages, the manor was held by the Chaworth family but eventually passed to the Brownlows in the 17th century. Edmund Cartwright (1743-1823), the inventor of the power loom and the wool-combing machine, lived in Low Marnham until the end of the 18th century and went on to build Ossington Hall.

The present church dates from the 13th century, with numerous later additions and alterations. The north aisle was extended to accommodate a chantry chapel for a wealthy family, probably the Chaworths.

The church contains many striking monuments from the 17th, 18th and 19th centuries. Although wall paintings were once present along the north wall, they are no longer visible.

The church was placed in the care of The Churches Conservation Trust in 1986.

A thousand years of English history awaits you

The Churches Conservation Trust is the national charity protecting historic churches at risk.

We've saved over 340 beautiful buildings which attract more than a million visitors a year. With our help and with your support they are kept open and in use – living once again at the heart of their communities.



Access

Due to their age, historic church floors can be uneven and worn and lighting can be low level. Please take care, especially in wet weather when floors can be slippery.

Help us do more

To protect these churches, and others like them, we need your help. If you enjoy your visit please give generously or if you would like to become a CCT supporter and join in our exclusive 'behind-the-scenes' visits please go to our website.



THE CHURCHES
CONSERVATION TRUST

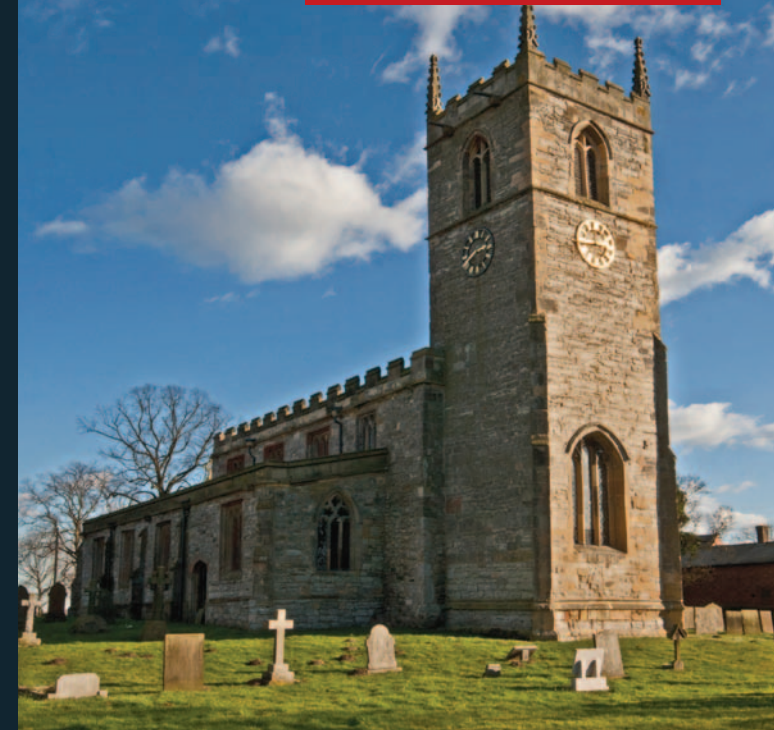
visitchurches.org.uk

The Churches Conservation Trust
1 West Smithfield, London EC1A 9EE
Tel: 020 7213 0660

Registered Charity No: 258612

© CCT 2012

your church tour



Church of St Wilfrid

Low Marnham



THE CHURCHES
CONSERVATION TRUST

The historic church of St Wilfrid

10 things to see before you leave...

- 1 Situated on the south wall beside the entrance is the **World War I memorial**, a plaque dedicated to the memory of three soldiers from the parish who lost their lives in the Great War.
- 2 The **font** is an 18th-century addition to the church. It is a plain octagon with a wooden cover on a pulley system. At the other end of the pulley rope, a golden Dove of Peace hovers over the church.
- 3 In the north aisle there is a single window containing 15th-century **stained glass**, depicting St James with a small roundel above his head. The glass in the east window, dating from the 19th century, depicts the Crucifixion, the Resurrection and the Ascension.
- 4 The **pulpit** is a 19th-century addition, which echoes the forms of Gothic tracery in its carving and crenellation.
- 5 The **piscina** is a basin used by priests to wash the sacred vessels during the medieval Mass. This is set into a recess in the wall under a cinquefoil canopy at the east end of the south aisle. It probably dates from the 14th century.
- 6 The **Commandment boards** are on either side of the main window, with delicate gold lettering.
- 7 The **royal arms** are displayed above the chancel arch and date to the reign of George II (1727-1760). The arms are now slightly worn, but remain an impressive feature of the church.
- 8 The **chancel roof**, dating to the 19th century, has a delicate and elaborate design, contrasting with the otherwise plain roof of the nave.
- 9 In the north aisle is a **monument to William Wilson**, dated 1698. The monument itself is marble, adorned with cherubs and skulls.
- 10 A **holy water stoup** is located next to the main door of the church. This is an unusual survival as water stoups were normally removed during the 16th century, at the time of the Reformation.



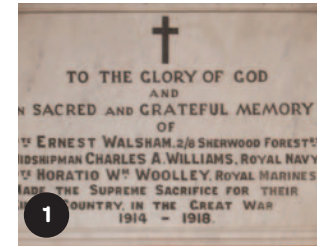
2



3



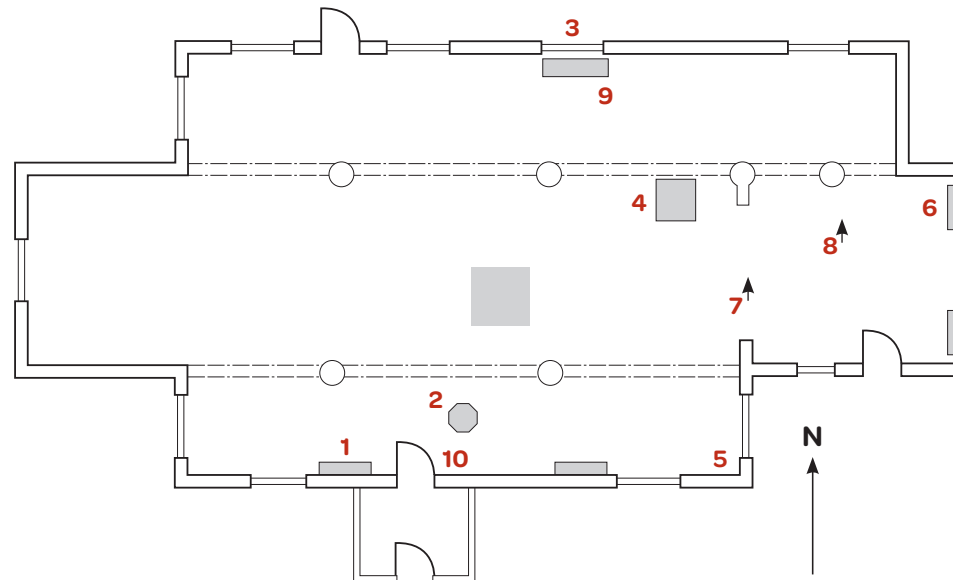
4



1



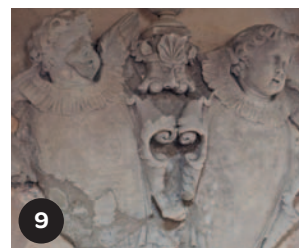
5



6



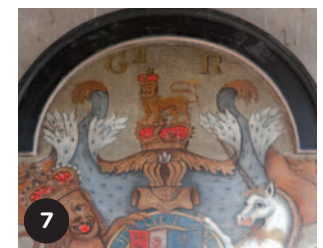
10



9



8



7