



About St Mary's

St. Mary's is unusual in that it shares a churchyard with neighbouring St. Adelwold's, which still holds regular services. Several churches existing side-by-side arose in some parishes during the medieval period. Where a parish church was given to a neighbouring monastery or priory, another might have been built by its side. This was the case in North Cockerington.

St. Mary's stands on the site of an 11th- century church which was given to the Gilbertines in the 12th century. After the Reformation it served the worshipers of North Cockerington as a parish church whilst the slightly later church of St. Adelwold served the parish of Alvingham. The Gilbertine order was the only monastic order native to England, and of the 29 Gilbertine priories in England, half of them were in Lincolnshire.

The name North Cockerington may derive from the word 'cocker' meaning crooked river. The church's fabric is predominately medieval but was extensively repaired in 1834 and again in 1841 when the tower, box pews and painted Biblical texts were added. The church's interior has distinctive Georgian and Victorian features, whilst little of the medieval character has remained. There are also three bells, two of which date to the 15th century, the other to 1634.

A thousand years of English history awaits you

The Churches Conservation Trust is the national charity protecting historic churches at risk.

We've saved over 340 beautiful buildings which attract more than a million visitors a year. With our help and with your support they are kept open and in use – living once again at the heart of their communities.



Access

Due to their age, historic church floors can be uneven and worn and lighting can be low level. Please take care, especially in wet weather when floors can be slippery.

Help us do more

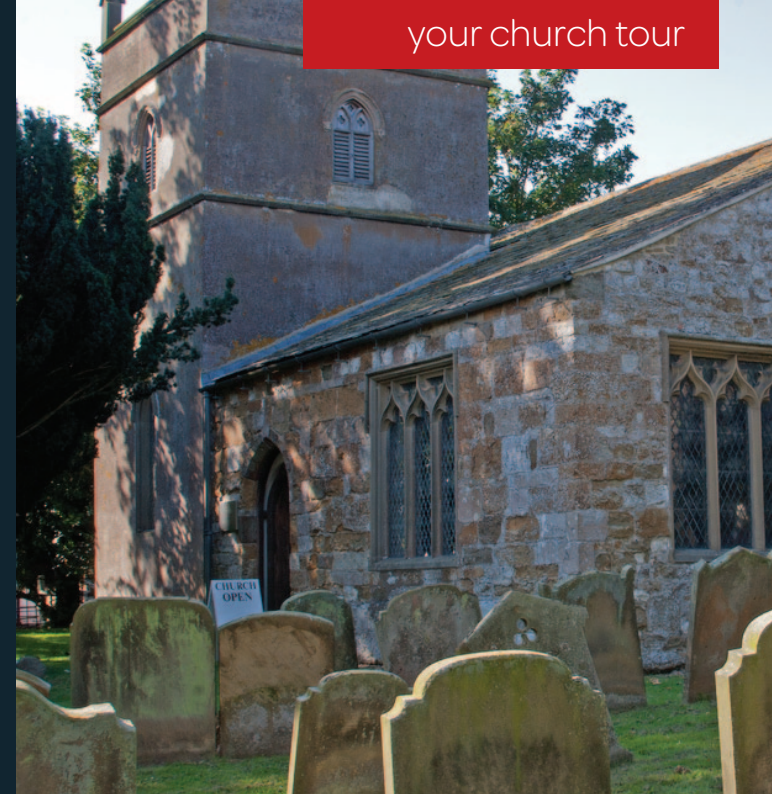
To protect these churches, and others like them, we need your help. If you enjoy your visit please give generously or if you would like to become a CCT supporter and join in our exclusive 'behind-the-scenes' visits please go to our website.



THE CHURCHES
CONSERVATION TRUST

visitchurches.org.uk

The Churches Conservation Trust
Society Building, 8 All Saints Street, London N1 9RL
Tel: 020 7841 0415
Registered Charity No: 258612
© CCT 2013



Church of
St Mary

North Cockerington



THE CHURCHES
CONSERVATION TRUST

The historic church of St Mary

10 things to see before you leave...

- 1 The medieval octagonal **font** is lined with lead, also used as decoration. The base of the font may be a reused column from the ruins of the priory.
- 2 Although Georgian in style, the **box pews** were actually made in 1841. These pews were commonplace from the early 17th century until the mid-19th century and were allocated to individual local families.
- 3 Most of the interior walls are decorated with **quotations** from the scripture.
- 4 The 13th-century **chancel arch** is flanked by carved faces on either side.
- 5 The wooden **pulpit** is a simple octagonal design and dates from the 19th century, possibly installed during the 1841 restoration.
- 6 The **communion rails** incorporate medieval designs, but were carved in 1870.
- 7 The **World War I** memorial commemorates three local men who served and perished during The Great War.
- 8 A badly mutilated **effigy** of a knight is accompanied by a lion with an unrealistically long tail. The style of armour dates this memorial to the late-14th century.
- 9 The medieval **sarcophagus** is also badly damaged. Note the carved recess for the head.
- 10 On the external south chancel wall is a **blocked doorway**. This would have been a priest's door, which allowed the priest easy access to the chancel for services.



1



2



3



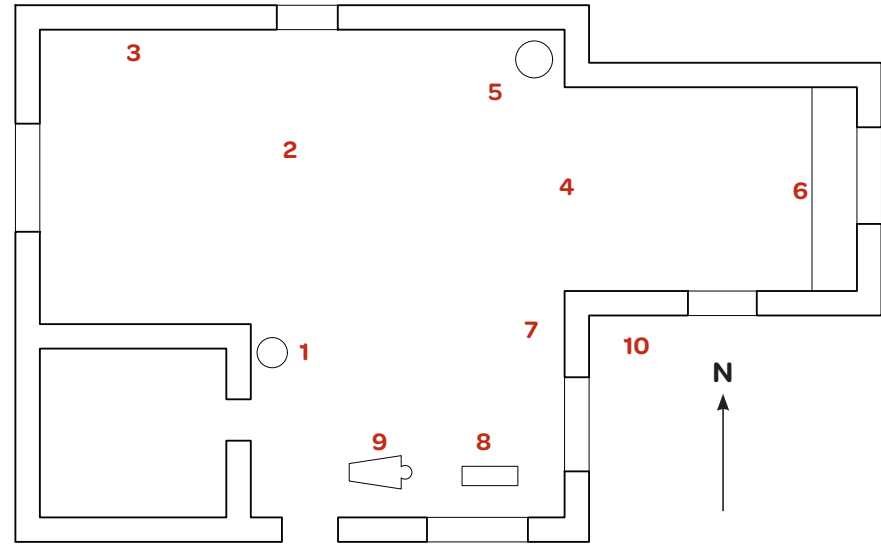
4



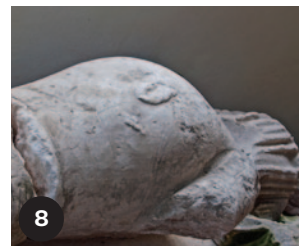
5



10



9



8



7



6