



# Learn about churches

## Session 3

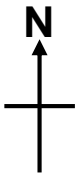
### The layout of a church

Now you are getting familiar with the inside of a church you are going to revisit All Saints Church in Cambridge.

This time you are going to make a plan of the church

Carefully make a copy of the plan (or print it).

Draw a compass and mark North, East, South and West



Now mark the location of the 5 features you have been learning about.

font

lectern

pulpit

altar

cross

You can decide whether to use drawings, words, or make a key.  
Include anything else that you think looks interesting on your plan.

Here is the link to All Saints again.

[https://artsandculture.google.com/streetview/all-saints-church-cambridge/NgHnRwntwUq9Ow?sv\\_lng=0.1233110697231379&sv\\_lat=52.20816744991782&sv\\_h=300.02&sv\\_p=0&sv\\_pid=iwy7WO2RjqYAAARAtEaWAA&sv\\_z=1](https://artsandculture.google.com/streetview/all-saints-church-cambridge/NgHnRwntwUq9Ow?sv_lng=0.1233110697231379&sv_lat=52.20816744991782&sv_h=300.02&sv_p=0&sv_pid=iwy7WO2RjqYAAARAtEaWAA&sv_z=1)